

# Rotary Modules

## Technical Data – Summary Rotary Modules with external stop

	DM 4-90 AE	DM 4-180 AE	DM 5-90 AE	DM 5-180 AE	DM 6-90 AE	DM 6-180 AE
<b>Angular range of rotation [°]:</b>	0-90°	0-180°	0-90°	0-180°	0-90°	0-180°
<b>Torque M [Nm]:</b>	0,43	0,43	1,08	1,08	3,42	3,42
<b>Axial load Fa [N]:</b>	50	50	200	200	300	300
<b>Radial moment Mr [Nm]:</b>	2	2	10	10	15	15
<b>*Mass moment of inertia [kg cm<sup>2</sup>]</b>	see diagramme					
<b>Cylinder diameter:</b>	2xØ10	2xØ10	2xØ14	2xØ14	2xØ25	2xØ25
<b>Air consumption per cycle at</b>						
<b>Nominal stroke [Nl]:</b>	0,02/0,03	0,03/0,04	0,05/0,06	0,08/0,09	0,15/0,2	0,25/0,3
<b>Weight DM/DMZ</b>	0,3	0,3	0,8	0,8	1,6	1,6

Rotary modules may only be operated with outgoing air choke.

### For all modules

**Pneumatic connection: M5**

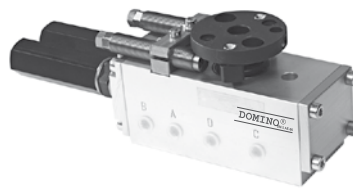
**Operating pressure: 4-7 bar**

**Temperature range: 0-60°C**

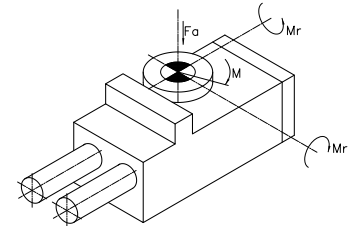
**Repeatability: +/- 0,05°**

**Angular range of rotation: 45-100°  
variably adjustable  
145-190°  
variably adjustable**

**Rotary Module 4/5/6 AE**



**Torques**



### Description for the DM 90° AE

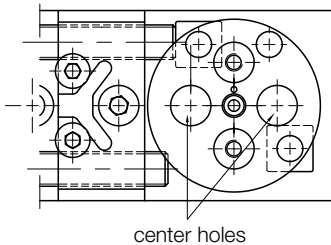
#### Important:

At the operation of the DM 90° AE you have to turn your attention on the mounting position! The DM 90° AE are going to be delivered in the position 0°, so that the center holes are horizontal to the axis and 90° turn clockwise (see position 90°).

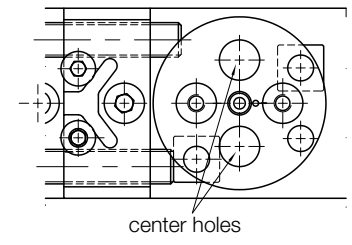
If the DM 90° AE has to turn counterclockwise, the center holes are at right angles to the axis!

**This have to be respected stringently for the Positioning/Mounting of grippers etc.**

**Rotary Module 4/5/6 90 AE  
Position 0°**

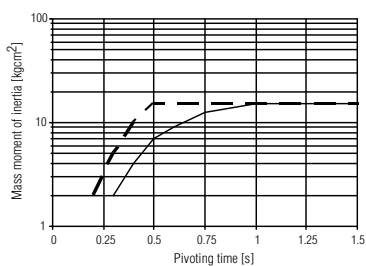


**Position 90°**

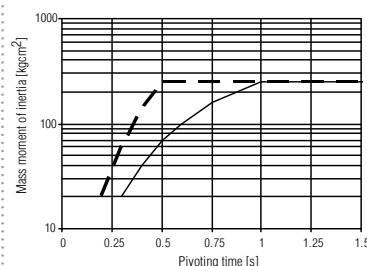


### Permissible pivoting time dependent on the mass moment of inertia

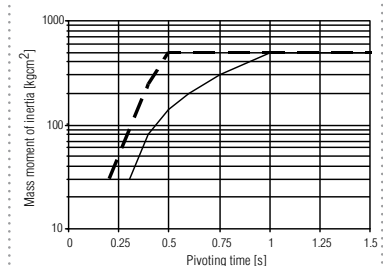
**DM 4 AE**



**DM 5 AE**



**DM 6 AE**

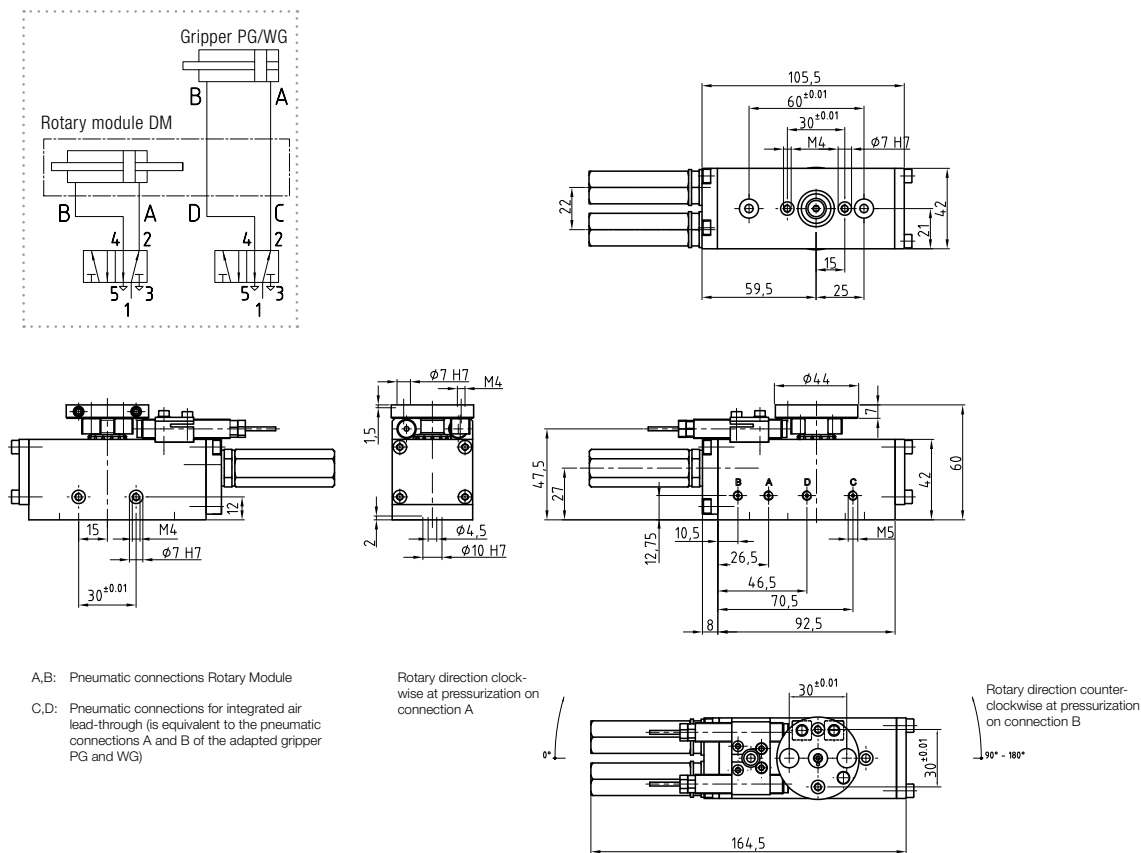


--- 90°      ——— 180°

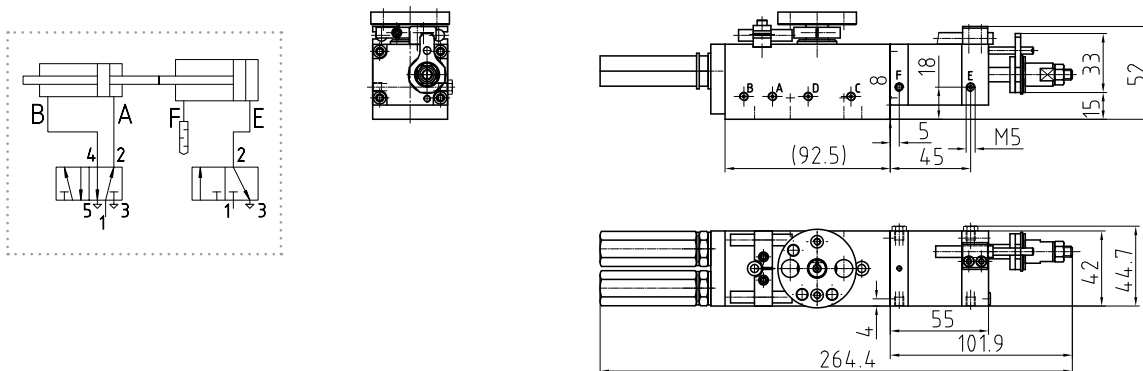
# Rotary Modules

## DM 5 AE / DM 5 Z – Pneumatic Rotary Modules

### Dimensional drawing and pneumatic diagram DM 5 AE



### Dimensional drawing and pneumatic diagram DM 5 Z



Designation	Order number	Zubehör	Order number	Options
DM 5-90 AE	300 5291	Centering ring Ø 7	300 1521	Grippers see page 98
DM 5 Z-90	300 4999	Centering ring Ø 10	300 1522	
DM 5-180 AE	300 5288	Limit switch Ø 3 (AE)	300 3162	
DM 5 Z-180	300 5000	Limit switch Ø 6,5	300 1845	
incl. 2 hydr. shock absorbers, 2 centering rings Ø7		Shock absorber	300 1390	
		Control cam 0-90°	300 2476	
		Control cam 0-180°	300 2477	
		Intermediate stop DZ 5	300 5252	
		See chapter Accessories		